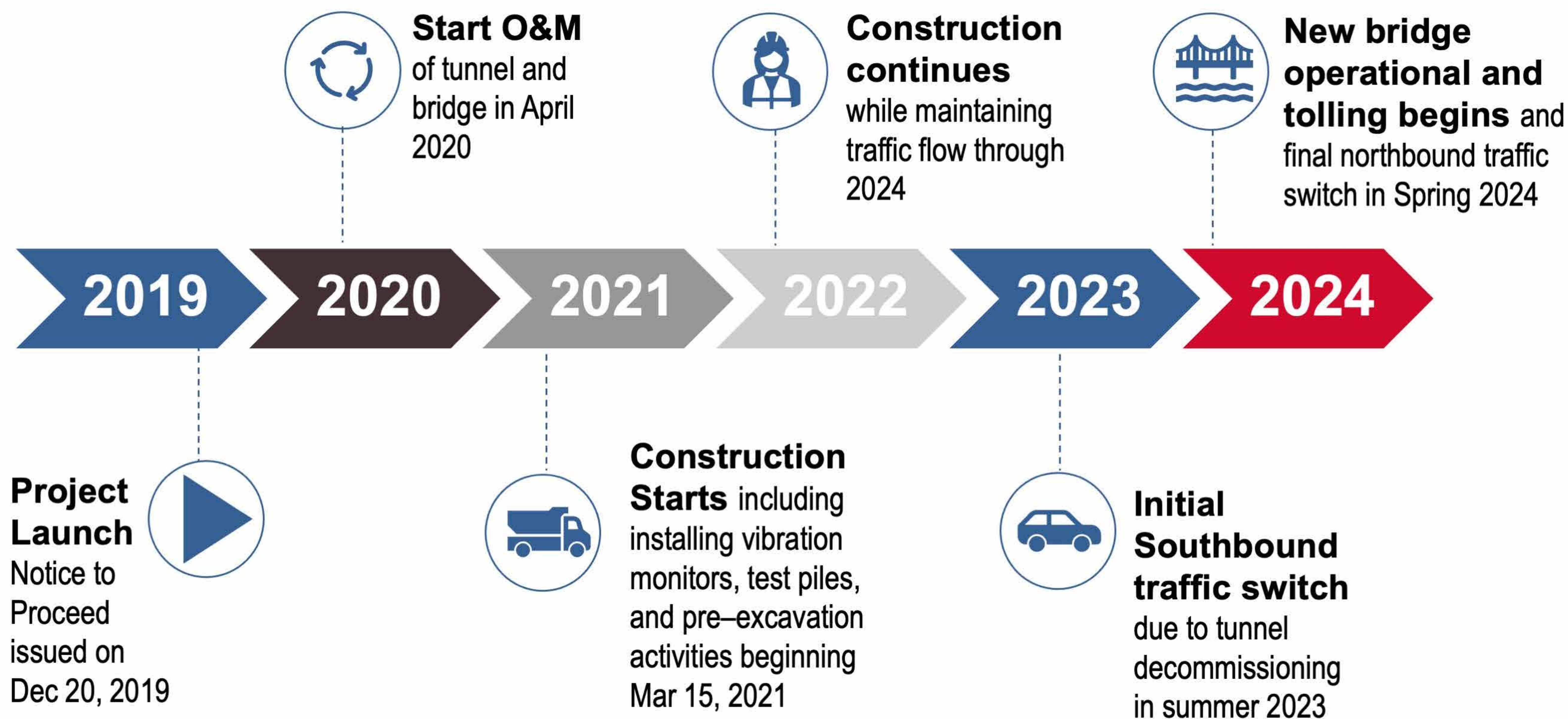


BELLE CHASSE BRIDGE AND TUNNEL REPLACEMENT PROJECT UPDATE

PROJECT SCHEDULE



LA 23 Federal Project No. H004791 | State Project No. H004791 | Plaquemines Parish | Public Open House | November, 2021



BelleChasseBridge.com

info@BelleChasseBridge.com | 504-459-9399



@BelleChasseBridge



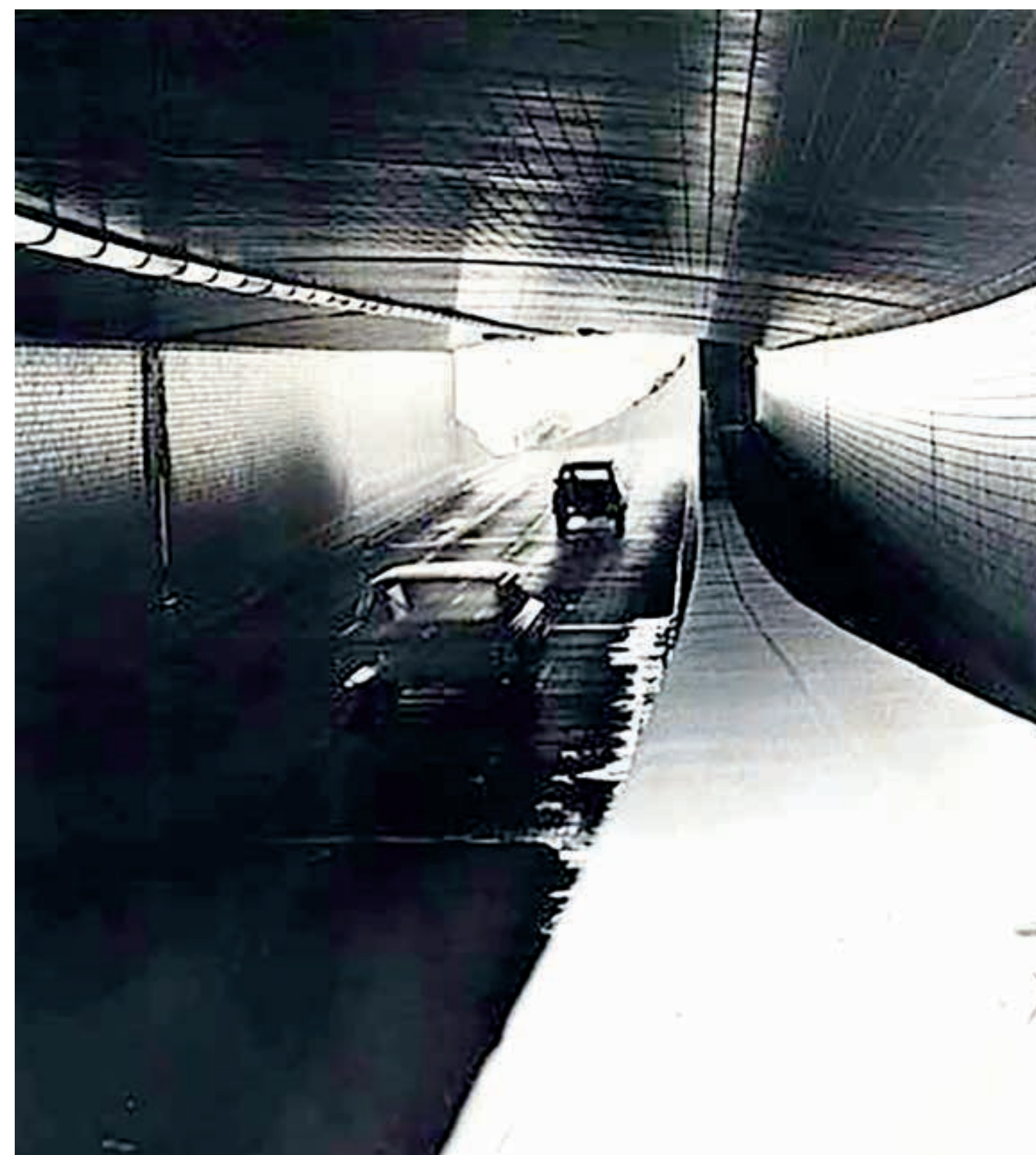
@Bridge_BC



BELLE CHASSE BRIDGE AND TUNNEL REPLACEMENT PROJECT UPDATE

EXISTING BRIDGE AND TUNNEL OPERATIONS AND MAINTENANCE

► TUNNEL

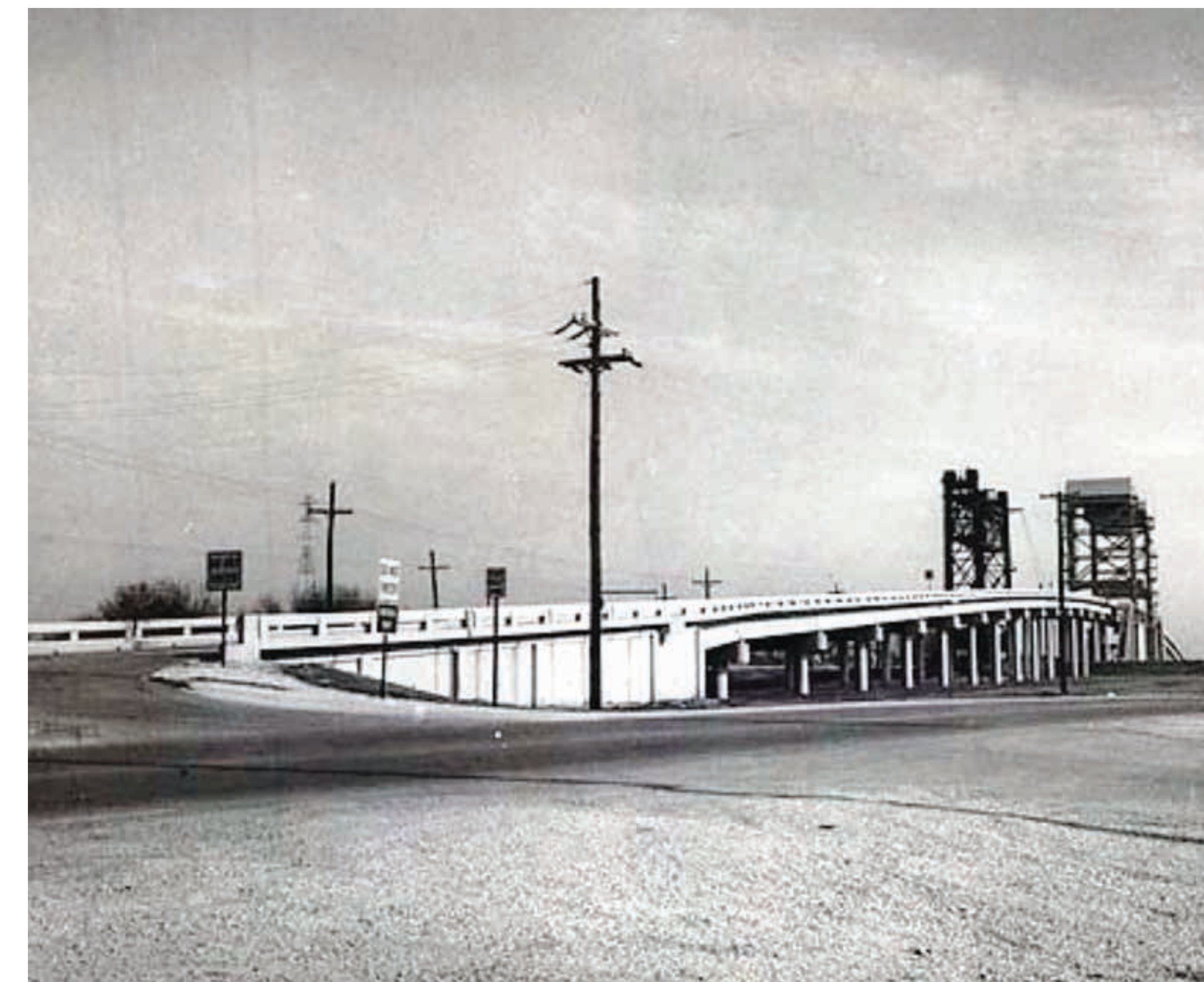


The Belle Chasse Tunnel was open to the public in 1956.

In 1962 newspapers reported tunnel leakage issues.

Photo by : Nola.com

► BRIDGE

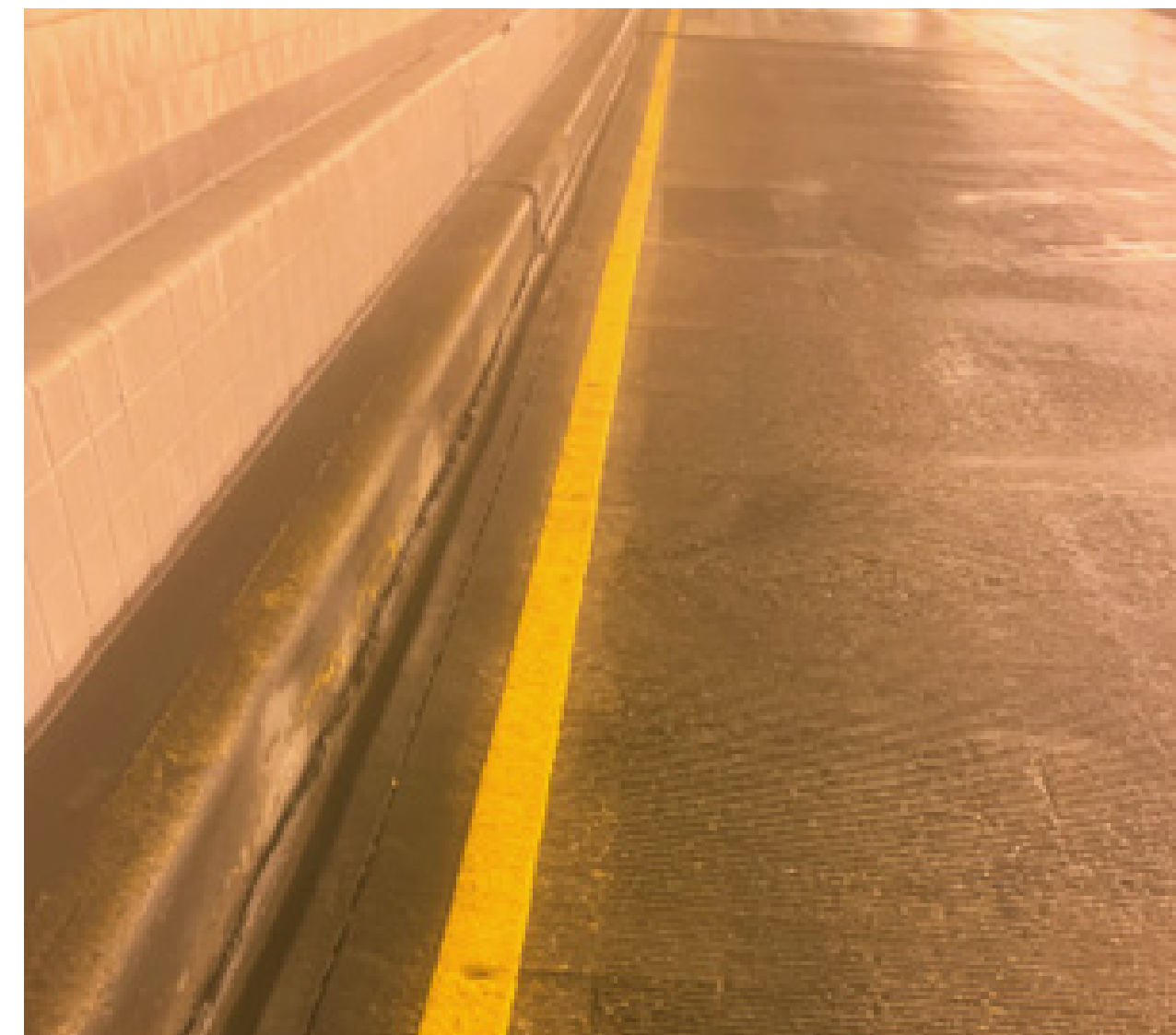


The Belle Chasse Bridge was open to the public in 1968.

Photo by: Nola.com



BEFORE TUNNEL CLEANING



AFTER TUNNEL CLEANING



BelleChasseBridge.com

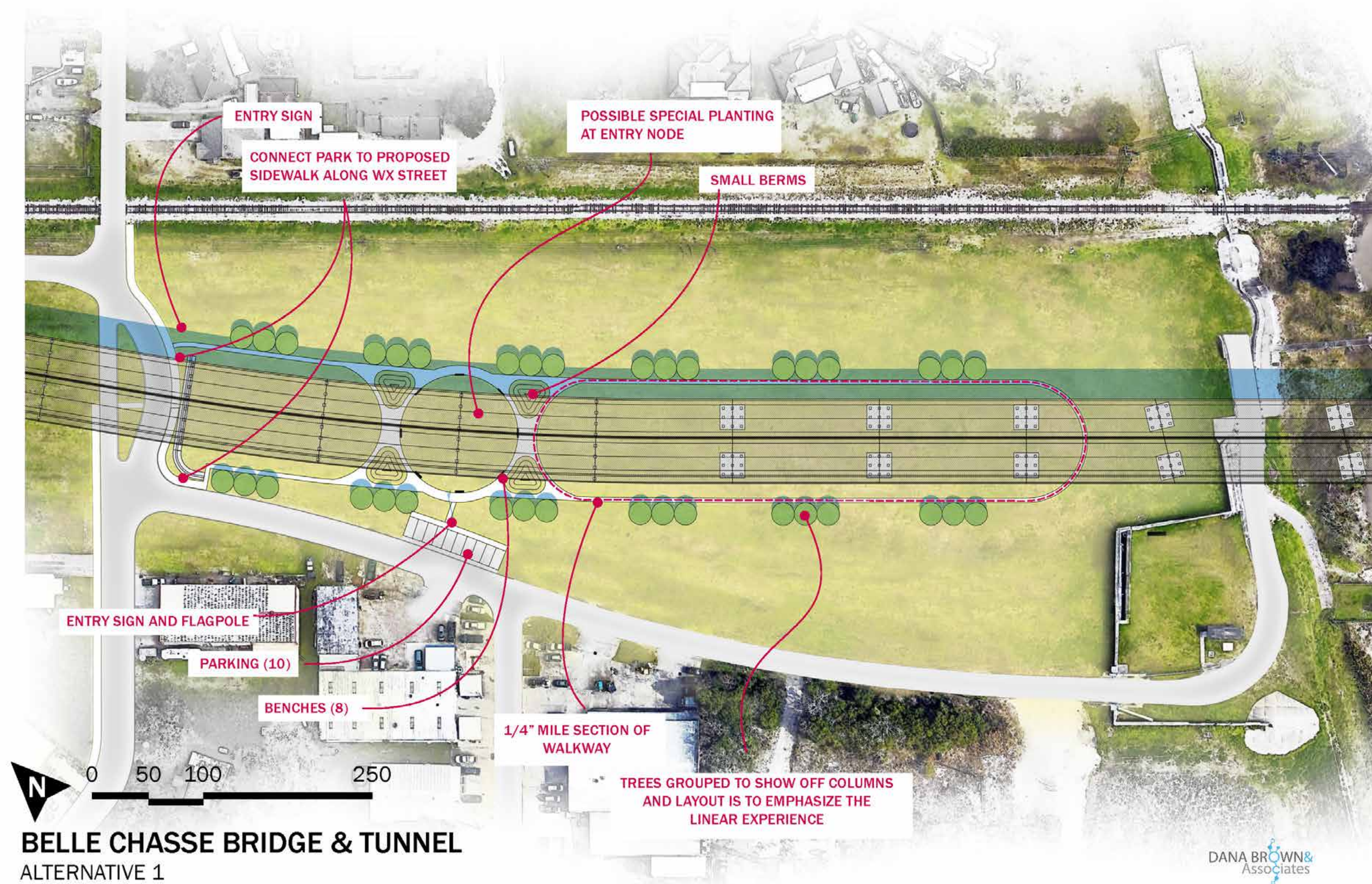
info@BelleChasseBridge.com | 504-459-9399

@BelleChasseBridge @Bridge_BC

LA 23 Federal Project No. H004791 | State Project No. H004791 | Plaquemines Parish | Public Open House | November, 2021



VETERANS PARK ENHANCEMENT



LA 23 Federal Project No. H004791 | State Project No. H004791 | Plaquemines Parish | Public Open House | November, 2021



BelleChasseBridge.com

info@BelleChasseBridge.com | 504-459-9399



@BelleChasseBridge



@Bridge_BC



BELLE CHASSE BRIDGE AND TUNNEL REPLACEMENT PROJECT UPDATE

CONSTRUCTION UPDATES



Driving First 48" Pipe Pile at Main Pier 1



South Side Progress with cofferdams, footings, and columns shown



Main Pier 1 Setting Battered Pile Template

LA 23 Federal Project No. H004791 | State Project No. H004791 | Plaquemines Parish | Public Open House | November, 2021



BelleChasseBridge.com

info@BelleChasseBridge.com | 504-459-9399



@BelleChasseBridge



@Bridge_BC



EMERGENCY NOTIFICATION PROCEDURE



Notify key Parish, State, and local leaders of events impacting tunnel and bridge operation.



Coordinate with key Parish, State, and local leaders to manage traffic and share information with residents, industry, and other LA 23 users.



New! Launching social media channels to communicate emergency notifications to followers.



Signs that describe closures, evacuation measures, and other emergency response information.



Notify LA 23 users in advance of planned events and in a timely manner for unforeseen events.

KEY PARTNERS

Plaquemines Parish

LA DOTD (headquarters and District staff)

Plaquemines Parish Sheriff's Office

Plaquemines Parish Fire Department

LA Department of Environmental Quality

U.S. Coast Guard

U.S. Army Corps of Engineers



BelleChasseBridge.com

info@BelleChasseBridge.com | 504-459-9399

@BelleChasseBridge @Bridge_BC

LA 23 Federal Project No. H004791 | State Project No. H004791 | Plaquemines Parish | Public Open House | November, 2021

