



# BELLE CHASSE BRIDGE AND TUNNEL REPLACEMENT PROJECT UPDATE

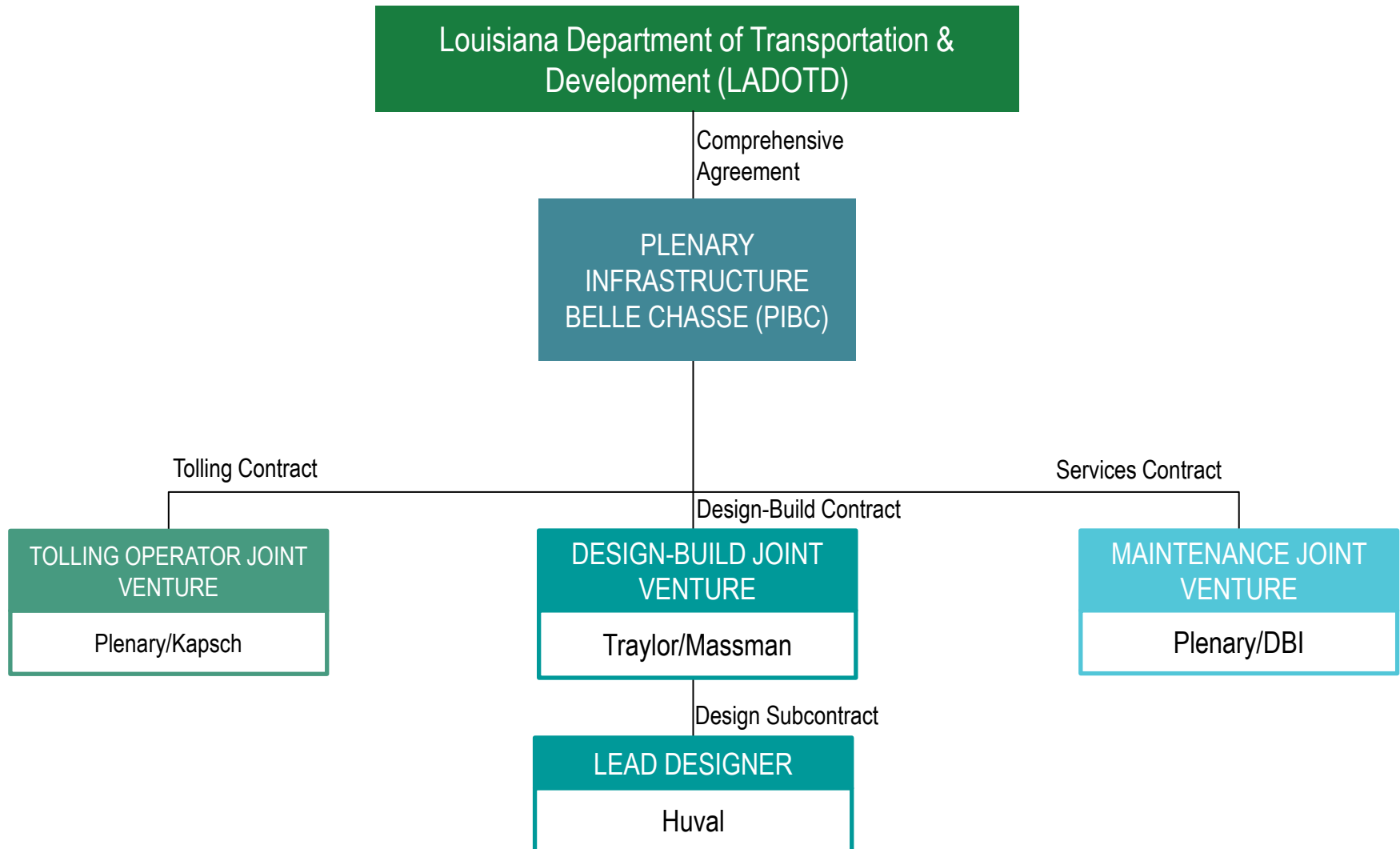
PLAQUEMINES  
PARISH COUNCIL  
MEETING  
AUGUST 12, 2021

---

# OVERVIEW

- **TEAM INTRODUCTION**
- **PROJECT, ROLES RESPONSIBILITIES**
- **PROJECT SCHEDULE AND STATUS**
- **OPERATIONS AND MAINTENANCE**
- **COMMUNICATIONS AND INCIDENT RESPONSE**

# PLENARY INFRASTRUCTURE BELLE CHASSE TEAM

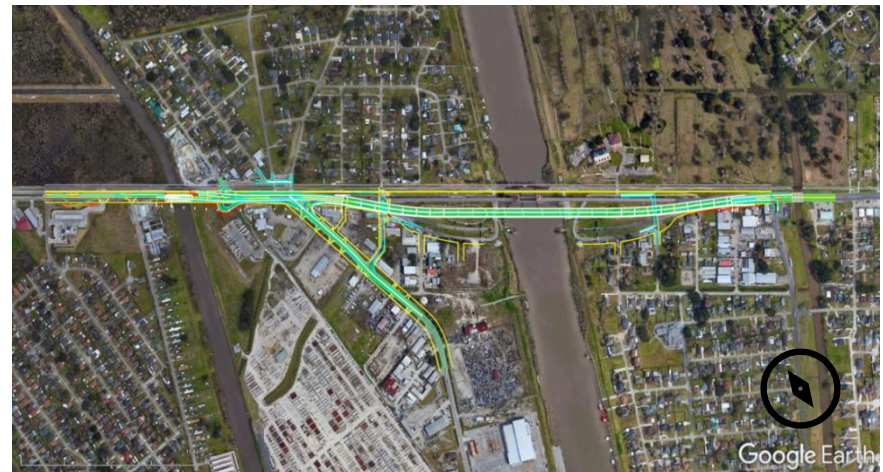


# PROJECT DESCRIPTION AND SCOPE

- Routine operations and maintenance of existing LA 23 Belle Chasse Bridge and Tunnel (DOTD retains major maintenance and rehabilitation as needed)
- Design and construction of a new 4-lane fixed span bridge, landscape and hardscape enhancements, bicycle and pedestrian facilities
- Removal of LA 23 Belle Chasse Bridge
- Decommissioning LA 23 Belle Chasse Tunnel
- Operating and maintaining new bridge for 30 years after completion (2024 – 2054)
- Develop new Electronic Toll Collection System (ETCS) for the New Bridge
- Assuming toll revenue risk (including all revenue risk associated with traffic, collectability and enforcement)

## ***Project Layout***

*Source: Plenary Infrastructure  
Belle Chasse. Google Earth*



---

# PUBLIC-PRIVATE PARTNERSHIP ROLES AND RESPONSIBILITIES

LA DOTD grants developer exclusive right and duty to design, construct, finance, operate and maintain the project at developer's own expense.

In return for performing work in accordance with contract documents, developer collects tolls revenues for 30 years and hands back structures in state of good repair.

Contract documents based on widely accepted government and industry precedent, including:

- Developer at-risk for costs and performance requirements
- DOTD audits, inspection, oversight
- Indemnification
- Insurance and performance security
- Hand back requirements

DOTD always retains ownership of the assets

# PUBLIC-PRIVATE PARTNERSHIP ROLES AND RESPONSIBILITIES (CONTINUED)

## **Developer (PIBC)**

- Inform the public on Project developments
- Invest equity and finance Project costs
- Deliver, operate and maintain Project
- Retain and manage subcontractors to perform certain portions of the Project
- Oversee, manage, and report on all phases of the Project
- Consult LA DOTD on certain Project elements including public information and communications

## **Project Sponsor (LA DOTD)**

- Monitor, oversight, inspect, and audit Project activities
- Use reasonable efforts to minimize any disruption to or impairment of the Developer's rights and obligations under the Contract
- Provide required governmental approvals and intergovernmental agreements.
- Make public funds payments during construction
- Conduct / or authorize major maintenance of existing structures during Design & Construction

# PUBLIC INFORMATION AND COMMUNICATIONS

*Developer, in consultation with LA DOTD, has developed and implements a Public Information and Communications Plan (PICP) to inform, educate, and engage individuals and “Customer Groups” within or adjacent to the Project:*

## **Developer’s “Public Information Coordinator” (Franklin & Associates) to:**

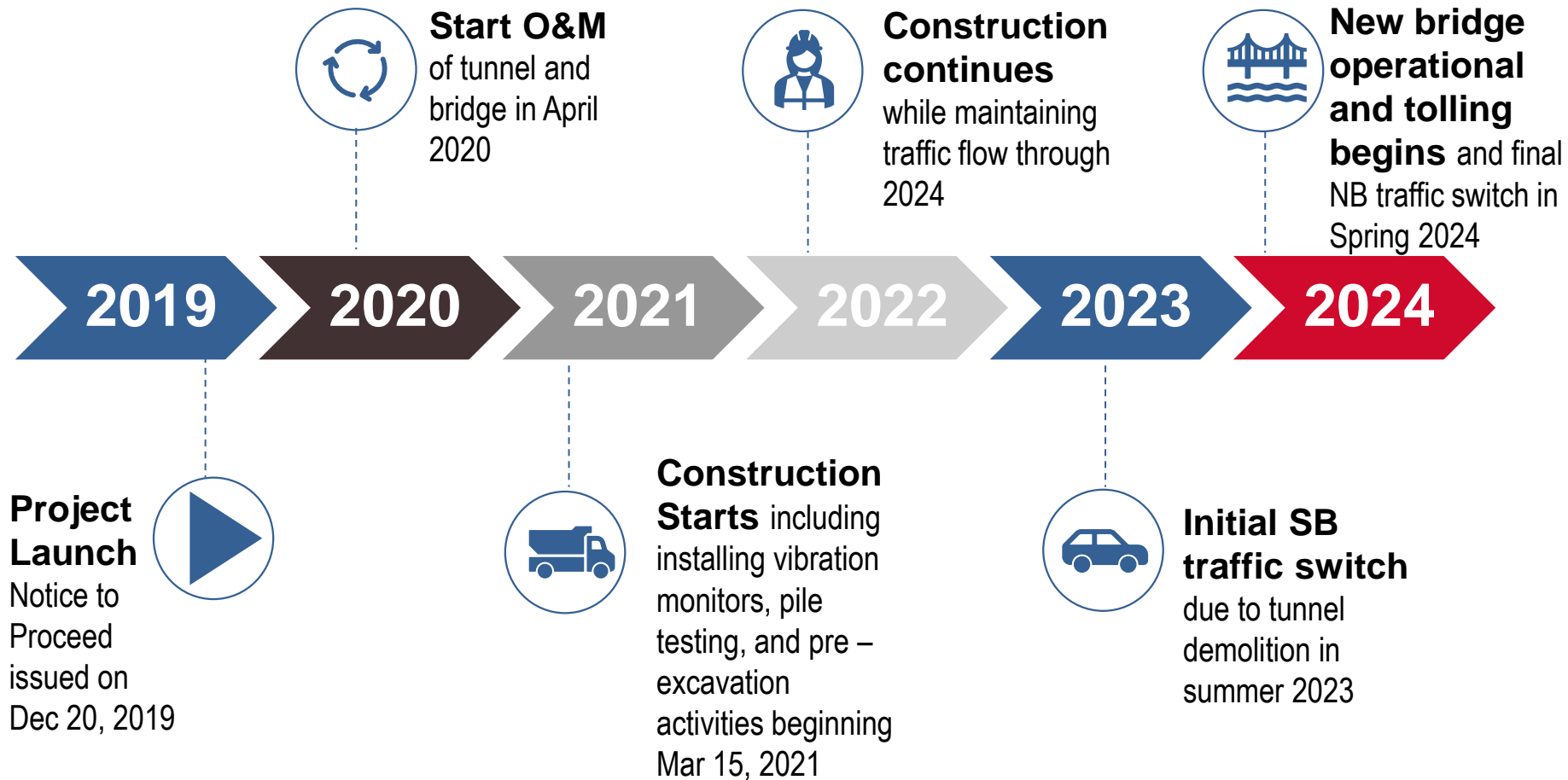
- Provide Project-related information inquiries regarding construction, traffic detours, traffic advisories, emergency events, and other potential Project impacts
- Maintain project website, email, and phone number
- Respond (within 3 business days) to public inquiries
- Individually and in groups, coordinate information and updates with Parish President, Parish Sheriff, and Parish staff
- Attend public meetings
- Coordinate media and other group tours of the Project



## **Upcoming Public Information & Communication (Q3-Q4):**

- Townhall meetings (Belle Chasse and Point-a-la-Hache)
- Updates at Parish Council meetings
- Social media updates
- Updates in the Gazette

# PROJECT SCHEDULE



# DESIGN AND CONSTRUCTION UPDATE

## ■ Design

- Currently ~80% complete
- Remaining design activities:
  - Project Right-of-Way
  - Utility Relocation and Installation
  - Existing Bridge and Tunnel Decommissioning Plan



## ■ Construction (ongoing and notable items):

- Foundation Test Piles (3 of 4 complete)
- Laydown yard and office established
- Survey and Vibration monitors installed on tunnel and bridge
- Started major cofferdams for bridge foundations
- Started excavation for main bridge pier foundations
- Started installing concrete piling for foundations
- Started relocating utilities (including initial PP waterline)



**Cofferdam Excavation**

Source: Plenary Infrastructure Belle Chasse.

# SAFETY MEASURES – EXISTING STRUCTURES

- Daily inspection and clean up of Tunnel and monthly deep cleaning with contingency traffic control for emergency debris removal
- Active and ongoing monitoring of tunnel and bridge for vibration and joints
- Updated electrical system to improve gate operations
- Surveys and videos conducted of structures adjacent to the Project to document potential impact of pile driving activities
- Environmental Controls in place to prevent stormwater runoff into GIWW

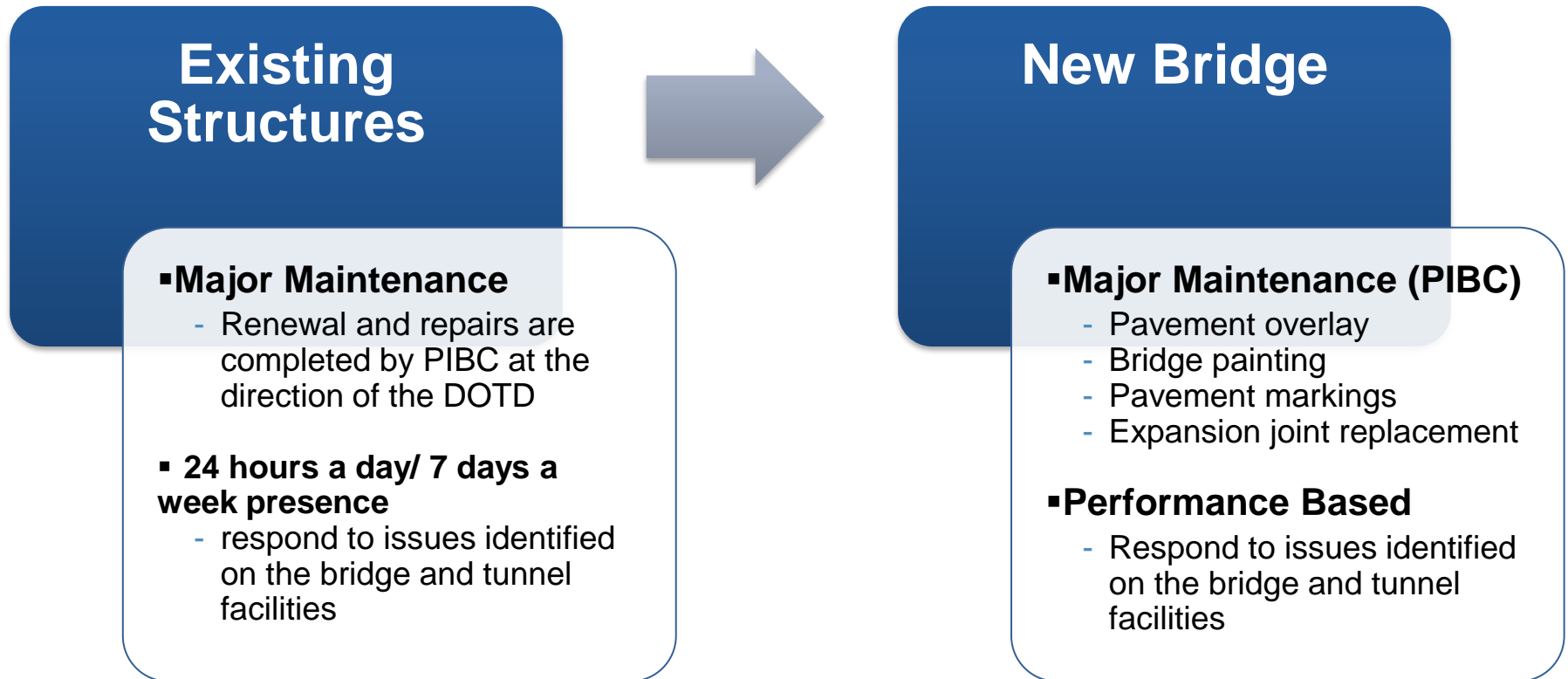


---

# OPERATIONS AND MAINTENANCE – EXISTING STRUCTURES

- **Bridge tender operations and maintenance technicians present 24/7 (on-call overnight and on weekends)**
- **Regular Operations and Maintenance activities include:**
  - Operate bridge deck to allow marine and vehicular traffic
  - Daily maintenance patrol
  - 2-3 times a month mowing and landscaping
  - Monthly tunnel cleaning
  - Repair equipment as needed
- **Recent Incidents (bridge)**
  - June 5, 2021: protective barrier on the oncoming side of the bridge became stuck in down position
  - June 14, 2021: bridge deck would not seat properly
  - June 21, 2021: bridge deck would not seat properly
  - June 22, 2021: oncoming right lane gate arm became stuck in up position
  - July 21, 2021: bridge deck would not seat properly (closed to marine traffic)

# OPERATIONS AND MAINTENANCE – PIBC RESPONSIBILITIES



## Performance based agreement

- Defined times for responding to incidents (Incident Response)
  - Incident Response – 1 hour
- Defined times for remedy and repairs (Existing Facilities Element)
  - Response - 24 hours
  - Repairs - 7 days Cat 2 Remedy (1 to 6 MO for Cat 2 baseline condition)

# INCIDENT RESPONSE AND COORDINATION



Notify key Parish, State, and local leaders of events impacting tunnel and bridge operation.



Coordinate with key Parish, State, and local leaders to manage traffic and share information with residents, industry, and other LA 23 users.



**New!** Launching social media channels to communicate emergency notifications to followers.



Signs that describe closures, evacuation measures, and other emergency response information.



Notify LA 23 users in advance of planned events and in a timely manner for unforeseen events.

## Key Partners

**Plaquemines Parish**

**LA DOTD (headquarters and District staff)**

**Plaquemines Parish Sheriff's Office**

**Plaquemines Parish Fire Department**

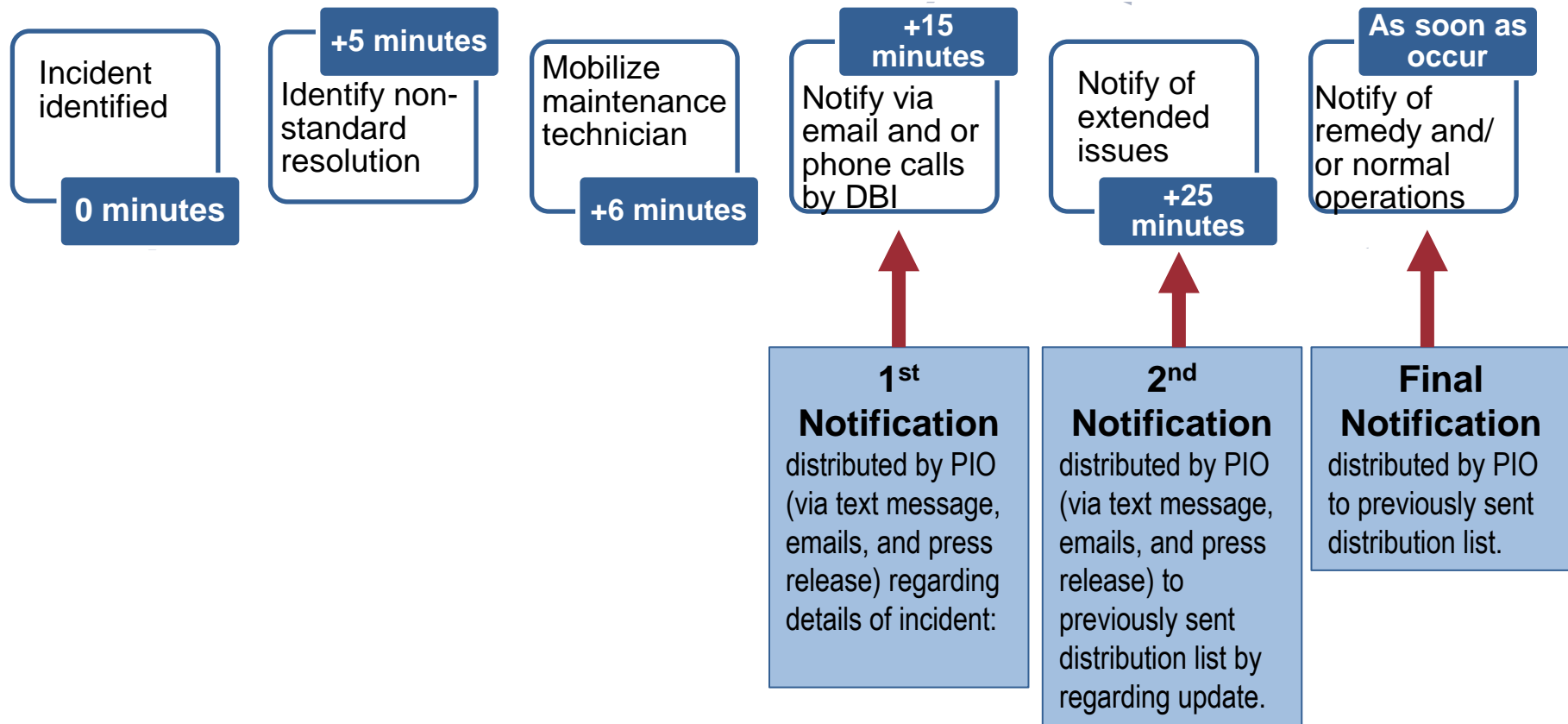
**LA Department of Environmental Quality**

**U.S. Coast Guard**

**U.S. Army Corps of Engineers**

# INCIDENT RESPONSE AND COORDINATION

## HIGHLIGHTS OF ENHANCEMENTS



# COMMUNICATING WITH YOU

## *Our commitment to increased public information & communication:*

- Hold 2 Townhall Public Meetings in Fall 2021
- Present project updates at Parish Council meetings on a regular basis
- New social media channels to share Project updates with followers
- Coordinate traffic management with regional event hosts

## *Ongoing efforts to communicate public information:*

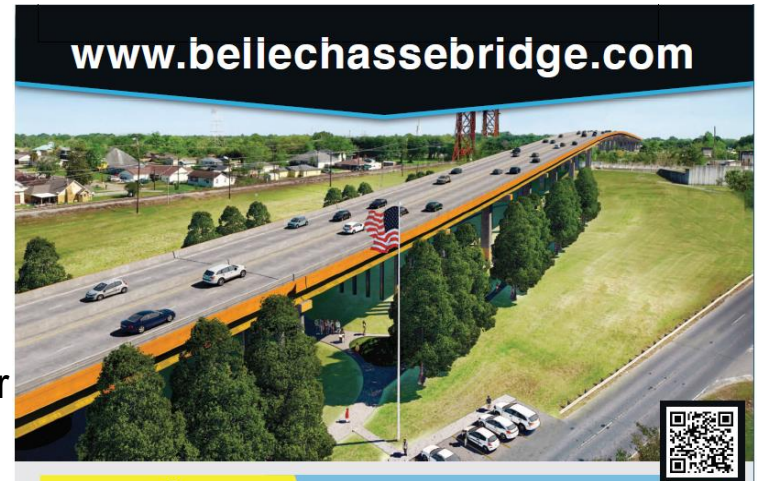
- Maintain project website, email, and phone number
- Coordinate traffic management with Parish President and Council, Parish Sheriff, and Parish staff
- Include Project updates in the Gazette
- Franklin & Associates provide Project related information and respond to public inquiries


## Contact us!

info@bellechassebridge.com

**(504) 459-9399**

**www.bellechassebridge.com**



  
**CONSTRUCTION ON THE  
NEW BRIDGE BEGAN IN  
FEBRUARY 2021**

**Visit the project website for:**  
Announcements | What to Expect  
Construction Updates/Timeframe  
Job Opportunities | Photos and Videos  
Frequently Asked Questions | Bridge Design  
And much more...

To receive real-time bridge and tunnel updates, sign up for project updates at the bottom of any of the website pages.

**Project Update Ad**

Source: *Plaquemines Gazette*. 2021, July 19



---

**Thank You for Your Time**  
**[info@bellechassebridge.com](mailto:info@bellechassebridge.com) | (504) 459-9399**

---